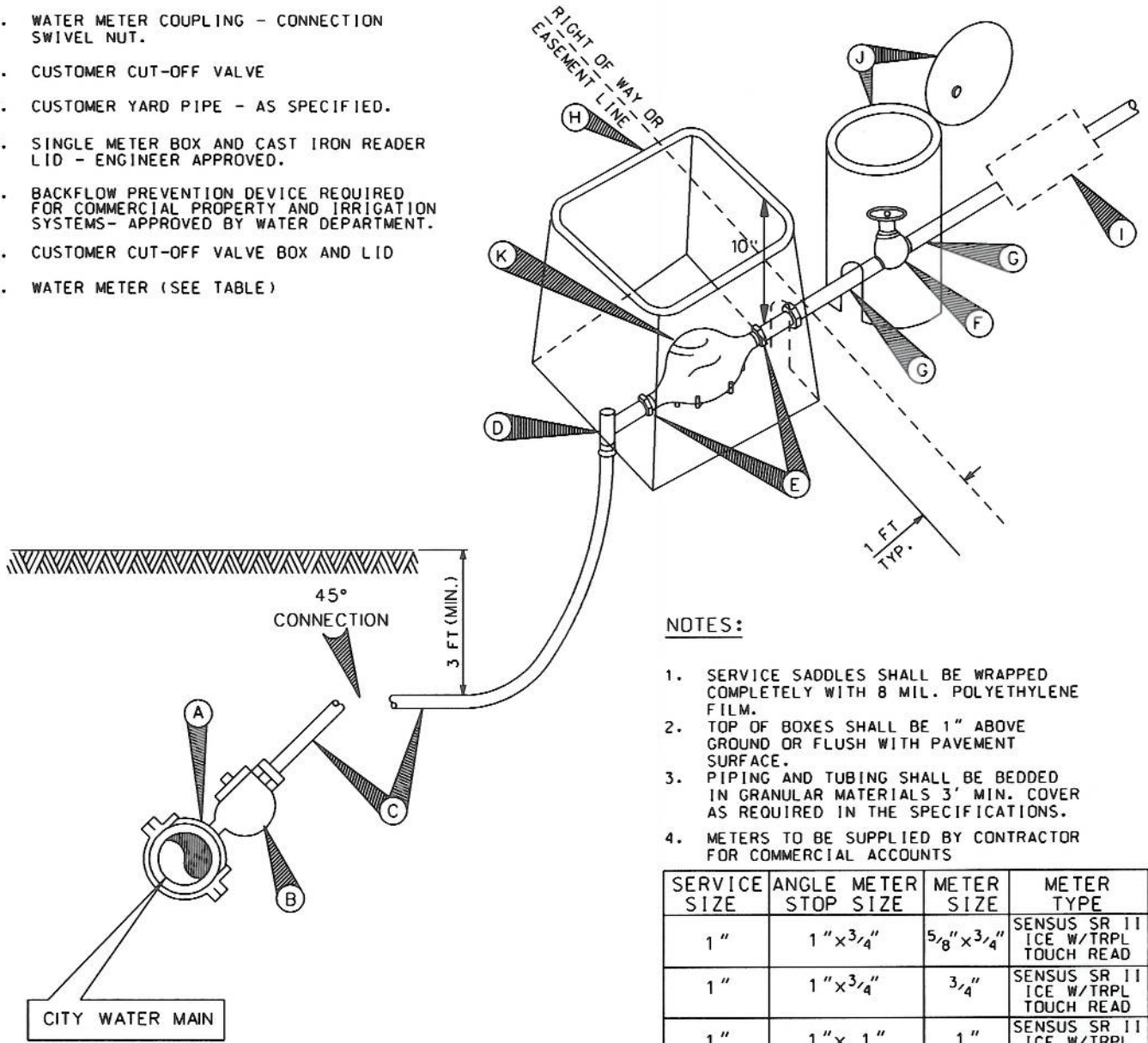


**MATERIALS LIST**

- A. SERVICE SADDLE REQUIRED
- B. CORPORATION STOP (COMPRESSION-TYPE FITTING).
- C. 1" TYPE K COPPER TUBING.
- D. APPROVED ANGLE METER STOP WITH PADLOCK WING. (COMPRESSION-TYPE FITTING).
- E. WATER METER COUPLING - CONNECTION SWIVEL NUT.
- F. CUSTOMER CUT-OFF VALVE
- G. CUSTOMER YARD PIPE - AS SPECIFIED.
- H. SINGLE METER BOX AND CAST IRON READER LID - ENGINEER APPROVED.
- I. BACKFLOW PREVENTION DEVICE REQUIRED FOR COMMERCIAL PROPERTY AND IRRIGATION SYSTEMS- APPROVED BY WATER DEPARTMENT.
- J. CUSTOMER CUT-OFF VALVE BOX AND LID
- K. WATER METER (SEE TABLE)



**NOTES:**

1. SERVICE SADDLES SHALL BE WRAPPED COMPLETELY WITH 8 MIL. POLYETHYLENE FILM.
2. TOP OF BOXES SHALL BE 1" ABOVE GROUND OR FLUSH WITH PAVEMENT SURFACE.
3. PIPING AND TUBING SHALL BE BEDDED IN GRANULAR MATERIALS 3' MIN. COVER AS REQUIRED IN THE SPECIFICATIONS.
4. METERS TO BE SUPPLIED BY CONTRACTOR FOR COMMERCIAL ACCOUNTS

SERVICE SIZE	ANGLE METER STOP SIZE	METER SIZE	METER TYPE
1"	1" x 3/4"	5/8" x 3/4"	SENSUS SR II ICE W/TRPL TOUCH READ
1"	1" x 3/4"	3/4"	SENSUS SR II ICE W/TRPL TOUCH READ
1"	1" x 1"	1"	SENSUS SR II ICE W/TRPL TOUCH READ

**5/8", 3/4", & 1" SINGLE METER SERVICE CONNECTION (IRRIGATION OR DOMESTIC)**

<p><i>The City of San Marcos</i> DEPARTMENT OF ENVIRONMENT &amp; ENGINEERING</p> <p style="text-align: center;"><b>STANDARD DETAIL</b> N.T.S.</p>	<p>APPROVED BY: </p> <p>SABAS AVILA, P.E., INTERIM DIRECTOR <span style="float: right;">DATE</span></p> <p>DRAWING: T/DETAILS/W-WMISING 04-08.DGN</p>
---	---