

Historic Hopkins Street



Conceptual Rendering

Hopkins at Scott Street





**FREESE
AND
NICHOLS**

The City of
SAN MARCOS

Neighborhood Meeting

Hopkins Street Reconstruction

(Moore Street to Bishop Street)

July 29, 2015

Introductions



Mayor – Daniel Guerrero

Place 1 – Lisa Prewitt

Place 4 – Jane Hughson

Place 2 – Jude Prather

Place 5 – Ryan Thomason

Place 3 – John Thomaides

Place 6 – Shane Scott

City Manager – Jared Miller,

Assistant City Manager – Collette Jamison

Director of Engineering and Capital Improvement – Laurie Moyer

Hopkins Street Project Manager – Richard Reynosa

The Project



The Project Mission



Pavement & Utility Rehabilitation



Traffic Calming



Complete Street Approach



Public Input

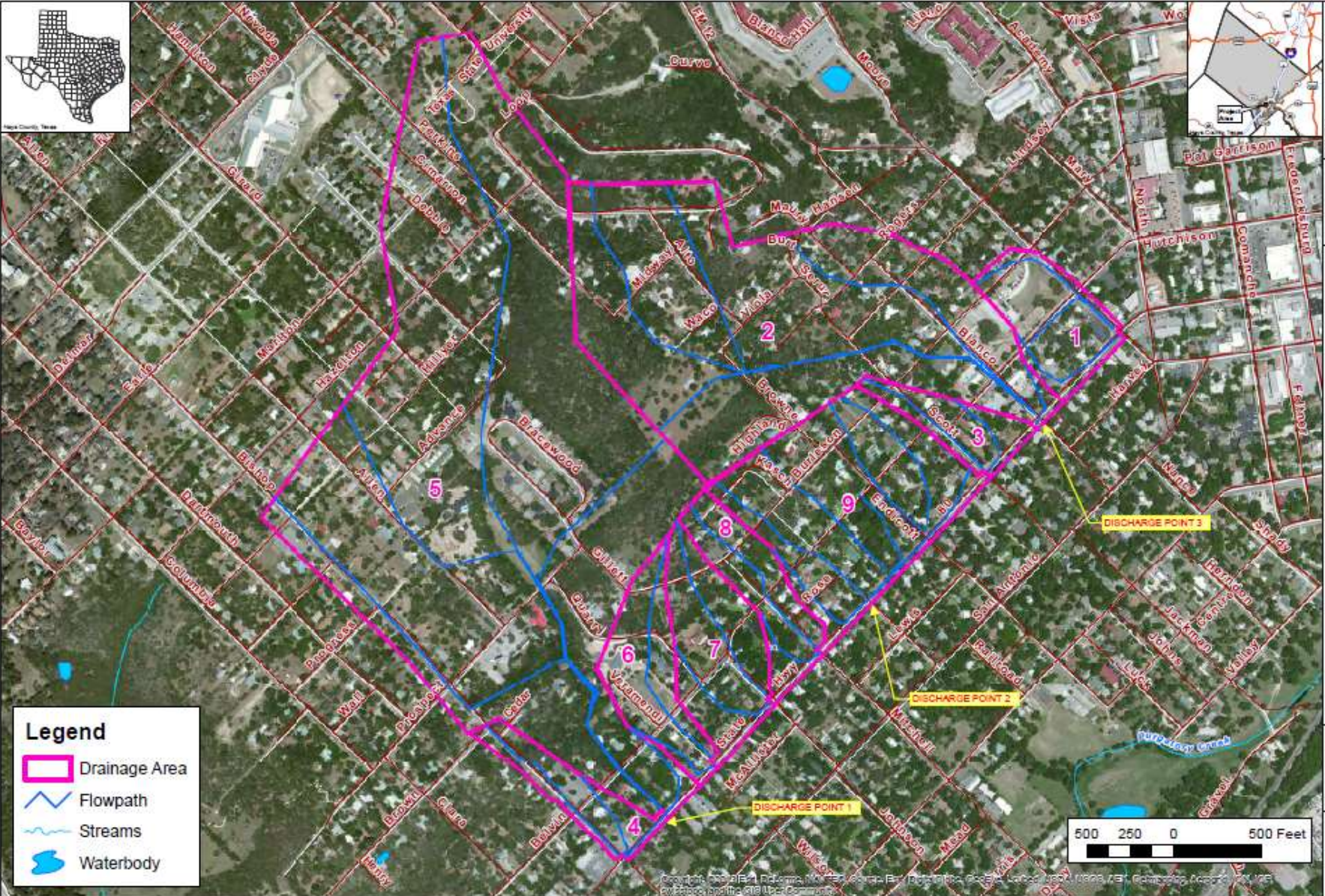


SAN MARCOS

Landscape Options



Public Input



DATE PLOTTED BY:	DATE:
DRAWN BY:	SCALE:
CHECKED BY:	PROJECT:
DATE:	NO. OF SHEETS:
TITLE:	SHEET NO.:



CITY OF SAN MARCOS
East Hopkins Street
Drainage Area and Flowpath

PRELIMINARY
FREE AND MACHINING
CITY OF SAN MARCOS
SAN MARCOS, TEXAS 78682
P: 512.332.3300
F: 512.332.3300

FIGURE
1

Public Input



Survey

- What type of stakeholder
 - Live on Hopkins
 - Live in the neighborhood
 - Use Hopkins - vehicle, bicycle, pedestrian
- Drainage Information
 - Local flooding issues
- Preferences
 - Traffic Calming
 - Landscaping
 - Lighting
 - Pedestrian amenities

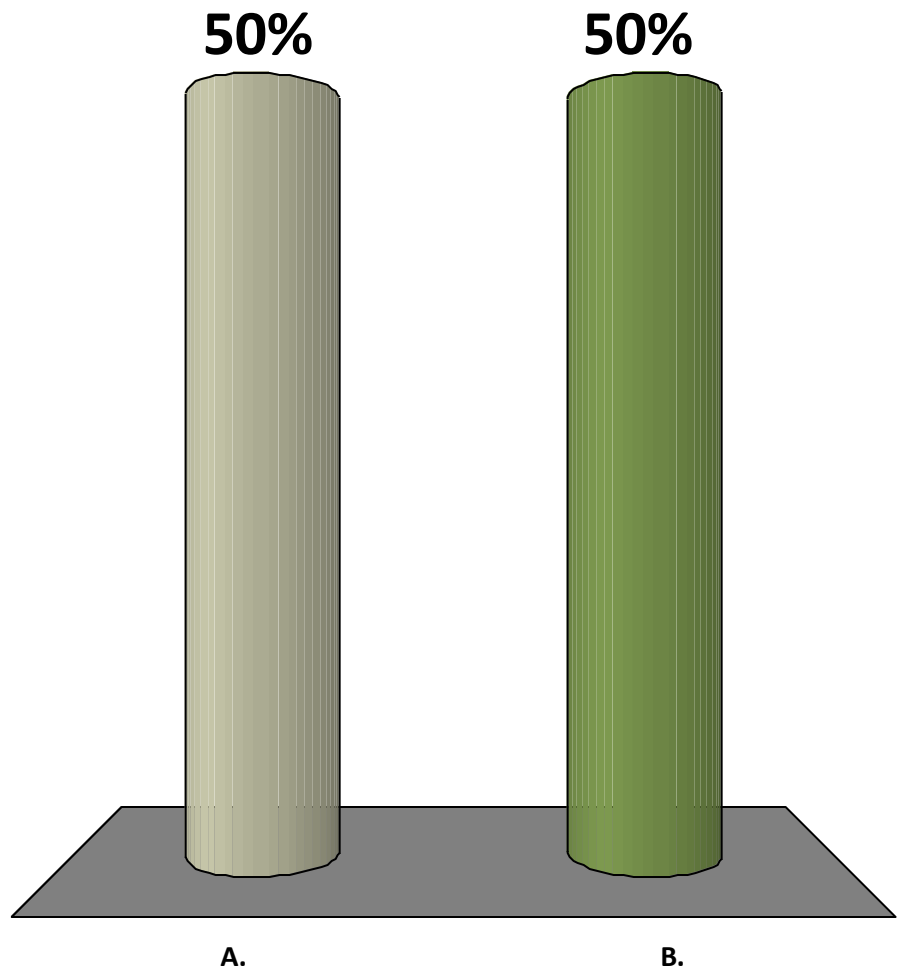
Notecards

Break-out Session



It has been hot outside

- A. True
- B. False

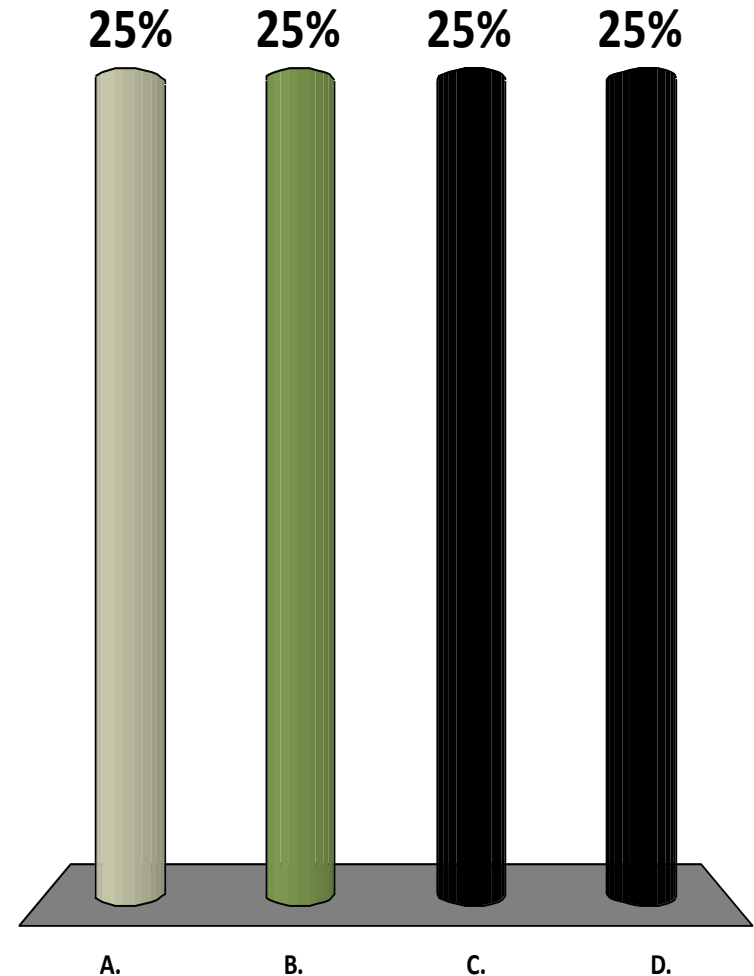


Survey

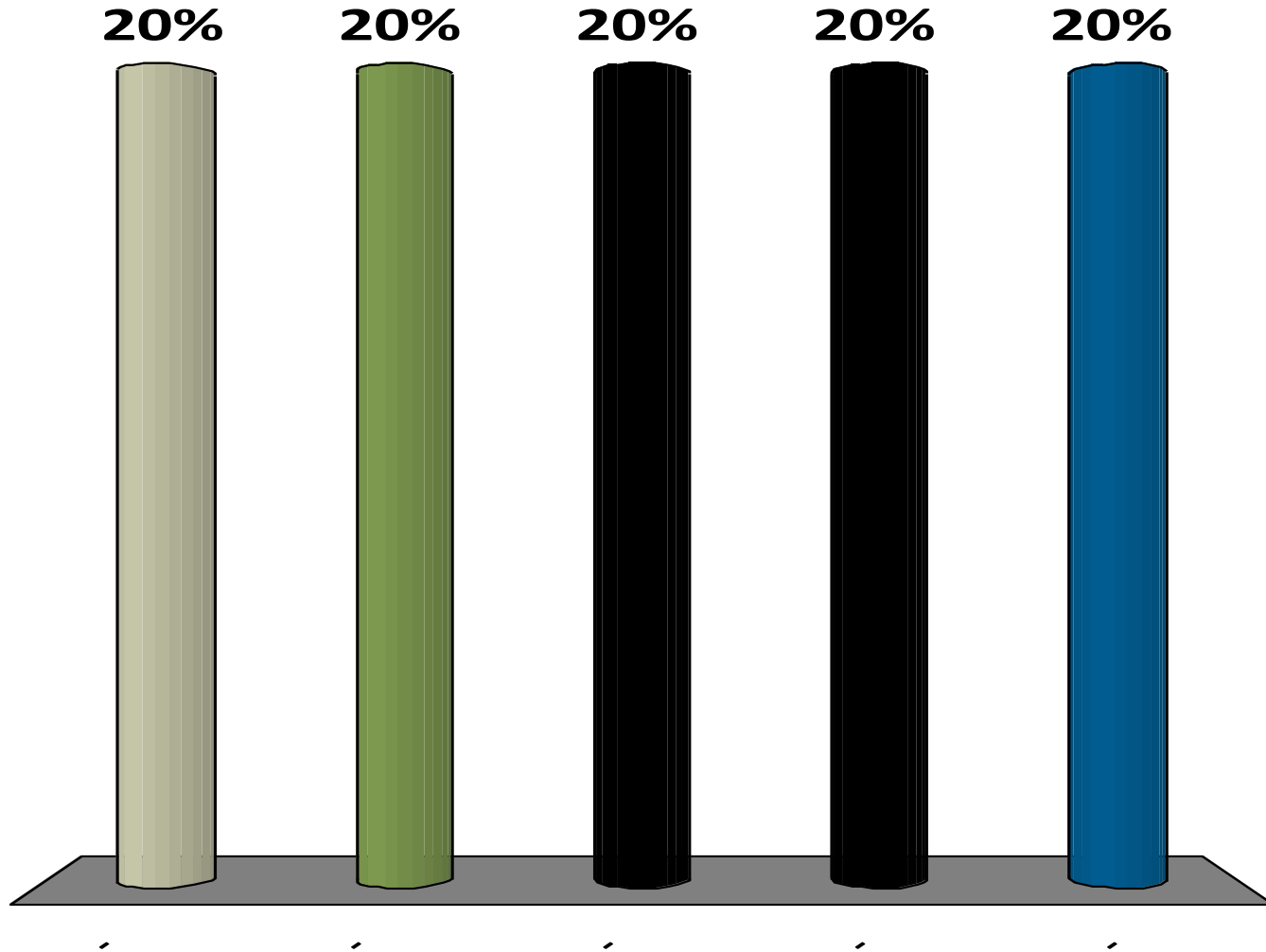


Which Best Describes You?

- A. I live on Hopkins Street within the project limits (Between Moore and Bishop Streets)
- B. I live on a street near the project limits.
- C. I do not live in the area, but travel Hopkins Street regularly.
- D. None of the above



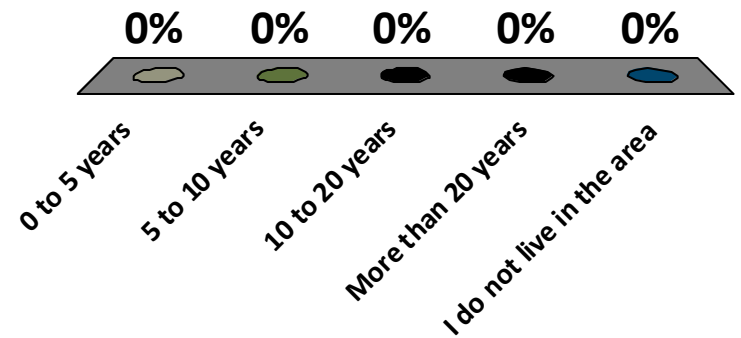
Which area on the map best describe where you live?





How long have you lived in the project area?

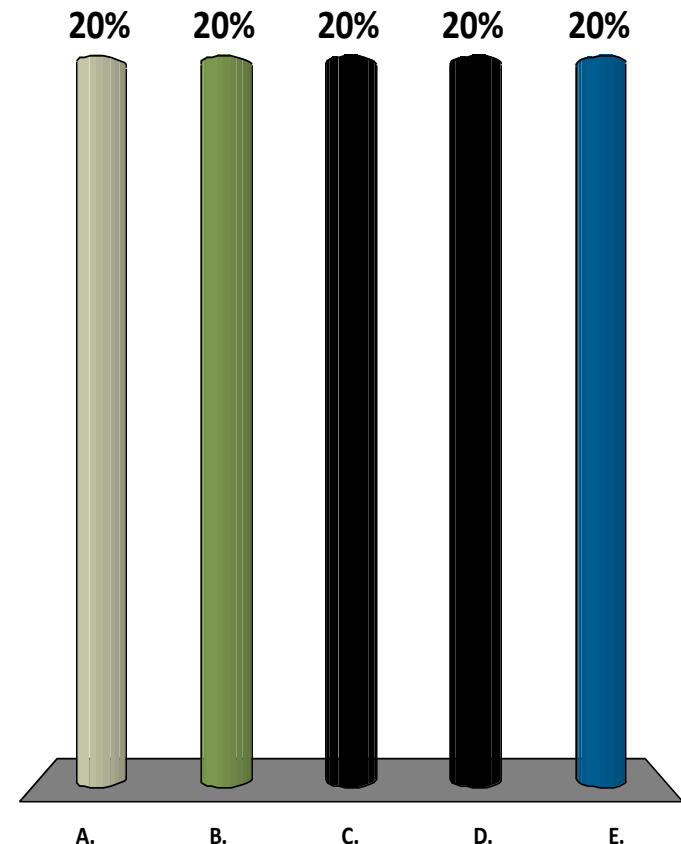
- A. 0 to 5 years
- B. 5 to 10 years
- C. 10 to 20 years
- D. More than 20 years
- E. I do not live in the area





Do you notice drainage problems in your area?

- A. Every time it rains
- B. On most rain events
- C. Only during big rainfall events
- D. Not really or have not noticed
- E. Water does not flood or pond in my area





What is your level of concern about drainage in the area?

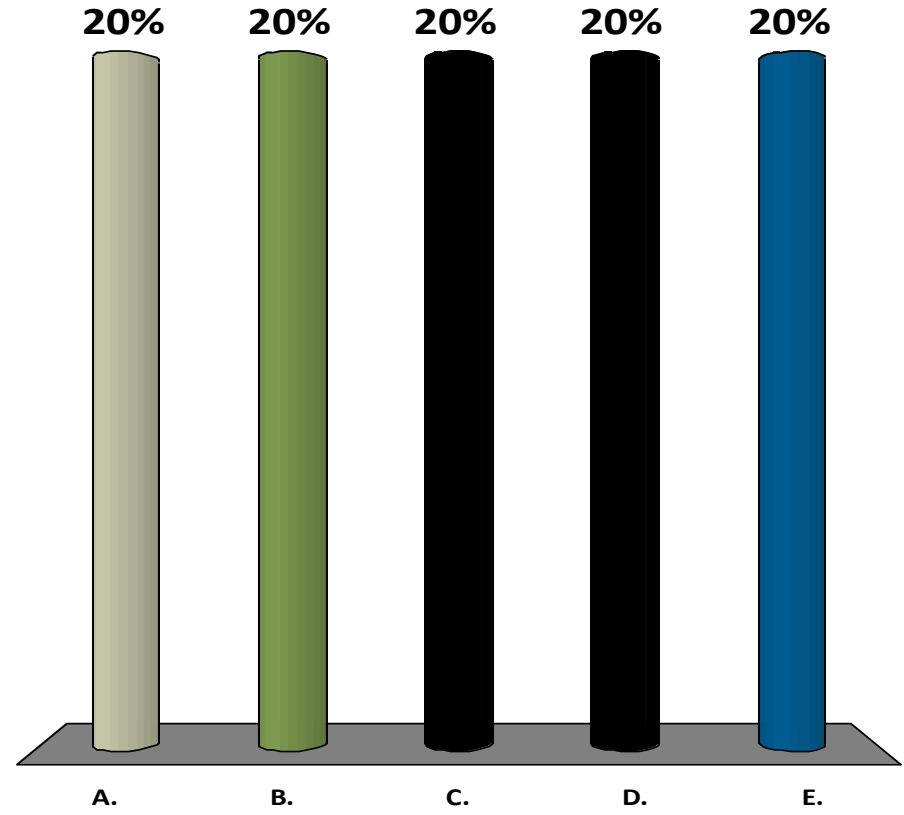
- A. Deeply Concerned – Significantly impacts you (floods structures, impact travel)
- B. Concerned – Gets close to structures, causes travel delays
- C. Neutral – Causes normal delays
- D. Not Concerned – (no changes needed)





How do you travel through Hopkins Street? (Select the best answer)

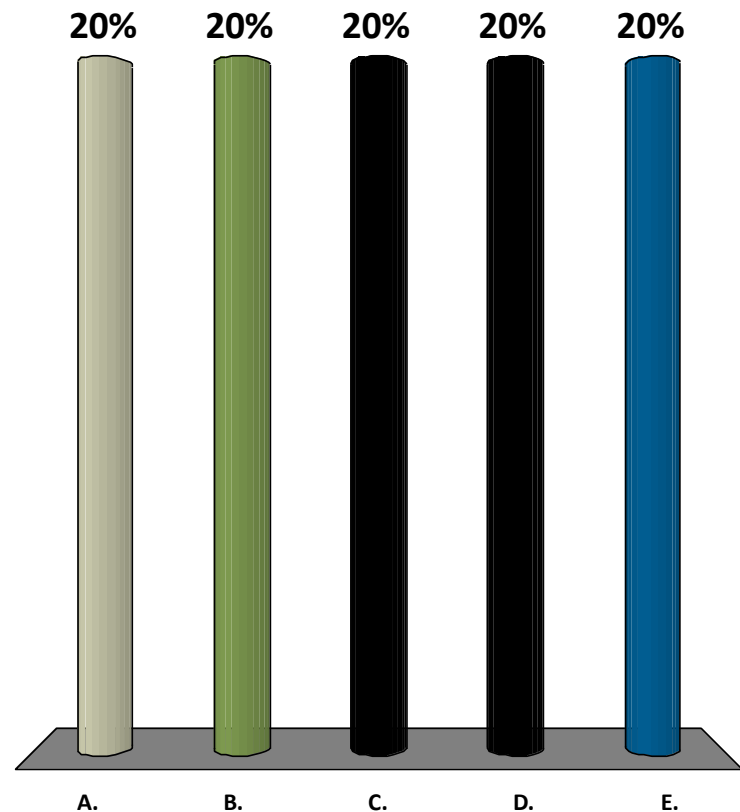
- A. Car or Truck (driving or as a passenger)
- B. Bus
- C. Bicycle
- D. Walking or Running
- E. I avoid Hopkins Street





Fix the pavement and make no other changes to Hopkins Street

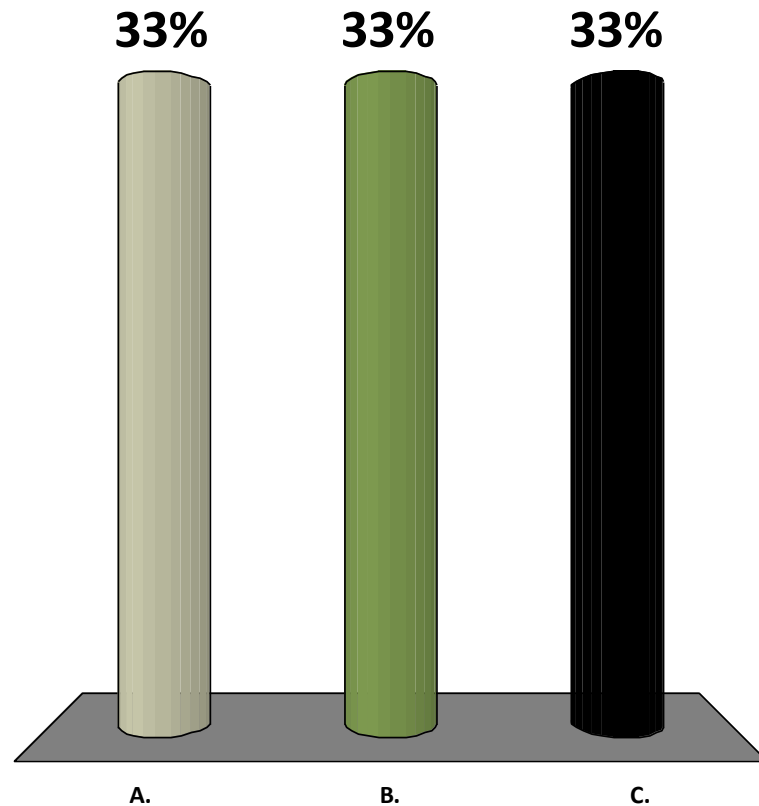
- A. Strongly Agree
- B. Agree
- C. Neutral
- D. Disagree
- E. Strongly Disagree





Do you see bicycle traffic on this section of Hopkins Street?

- A. Frequently
- B. Occasionally
- C. Have not noticed





We need more parallel parking along Hopkins Street

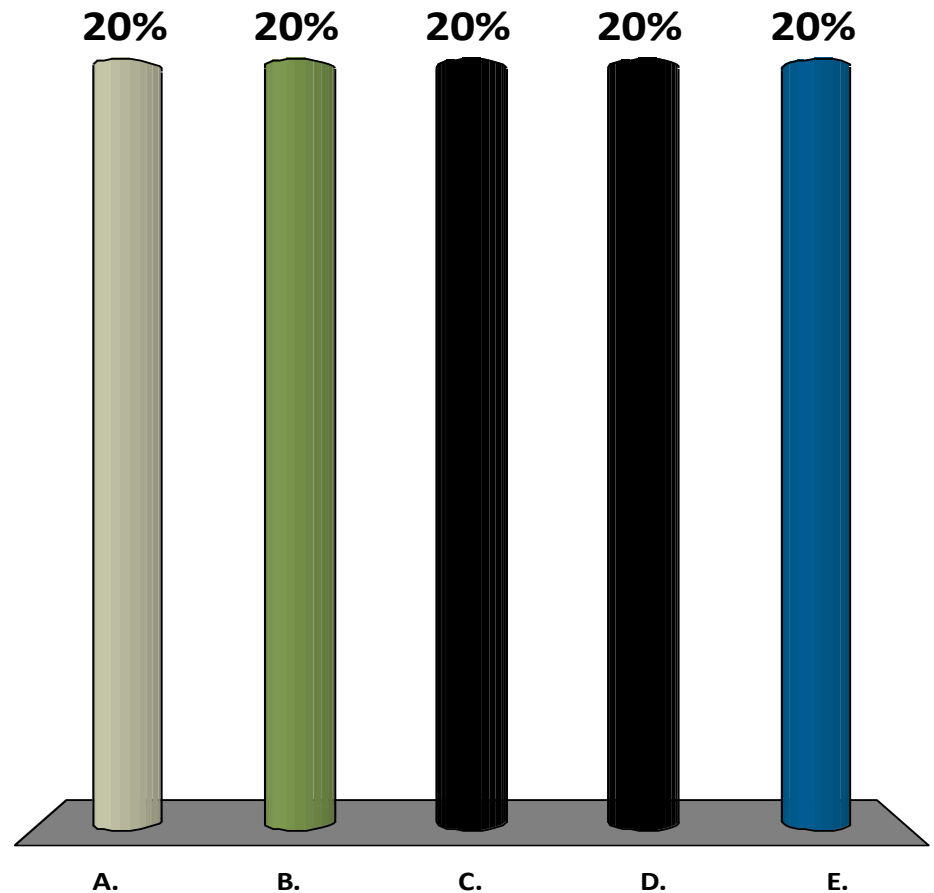
A. Strongly Agree

B. Agree

C. Neutral

D. Disagree

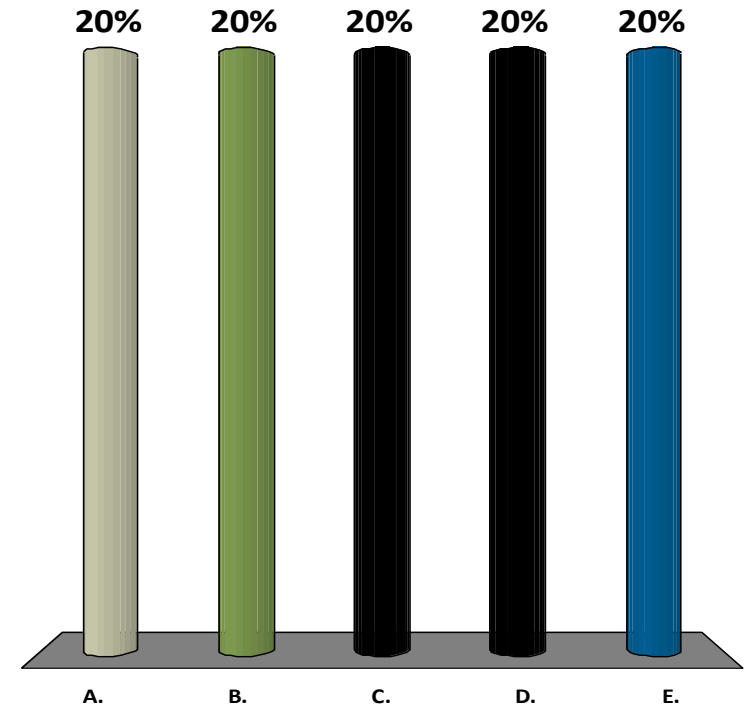
E. Strongly Disagree





Sidewalks should be improved (reconstructed, connected and widened) within the project area

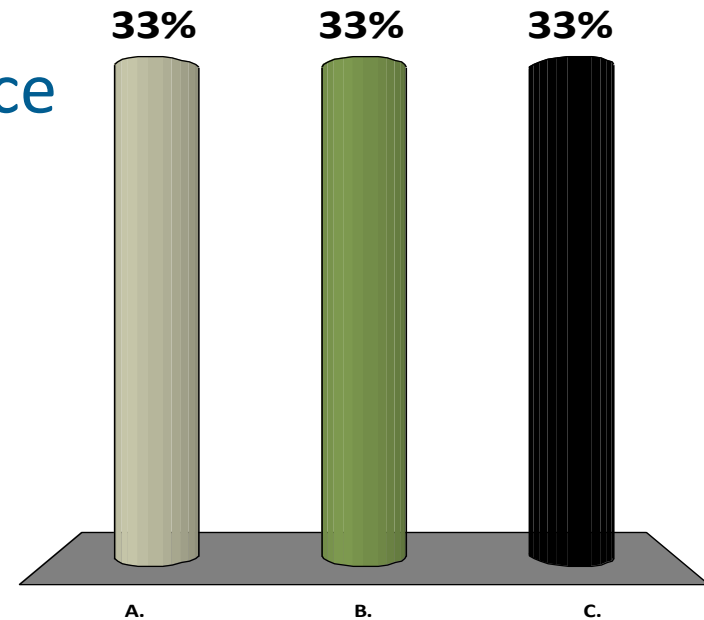
- A. Strongly Agree
- B. Agree
- C. Neutral
- D. Disagree
- E. Strongly Disagree





If sidewalk improvements require removal of trees, which of the following is preferred?

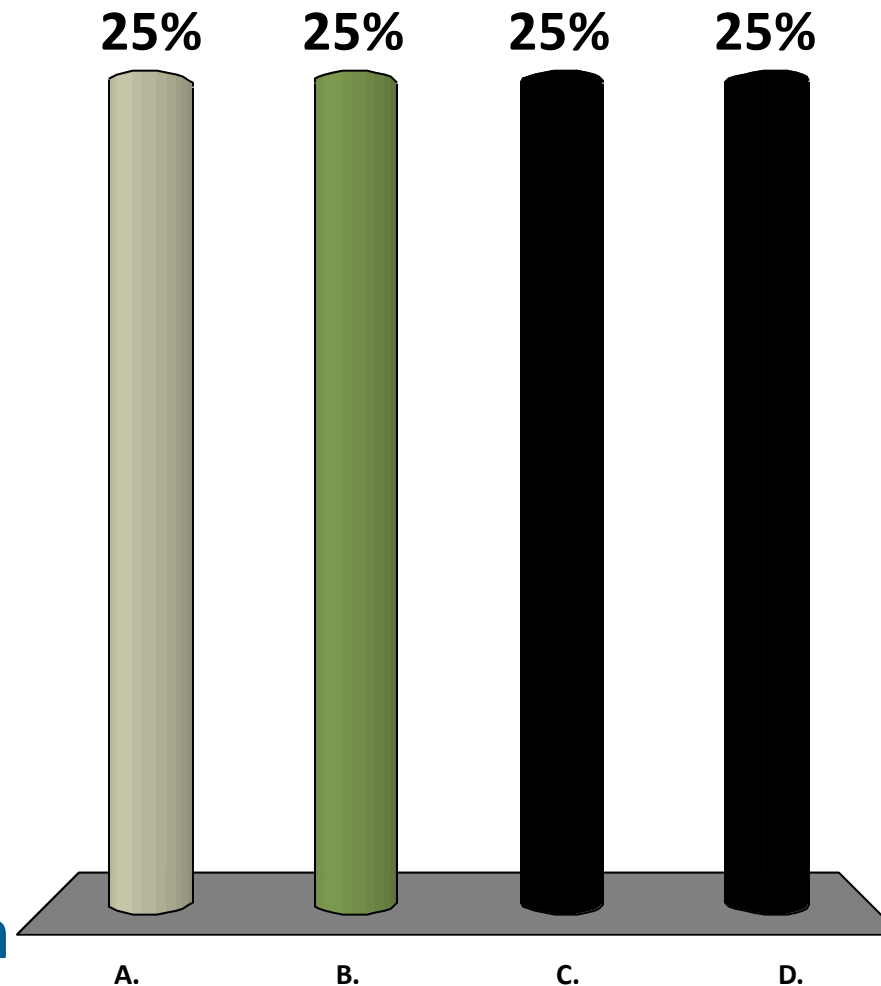
- A. Remove trees as needed and replace with new trees
- B. Preserve most existing trees at the expense of sidewalk widths and locations
- C. Preserve only larger trees, remove smaller trees to provide for sidewalks (and plant new trees)





What is your preference on Lighting?

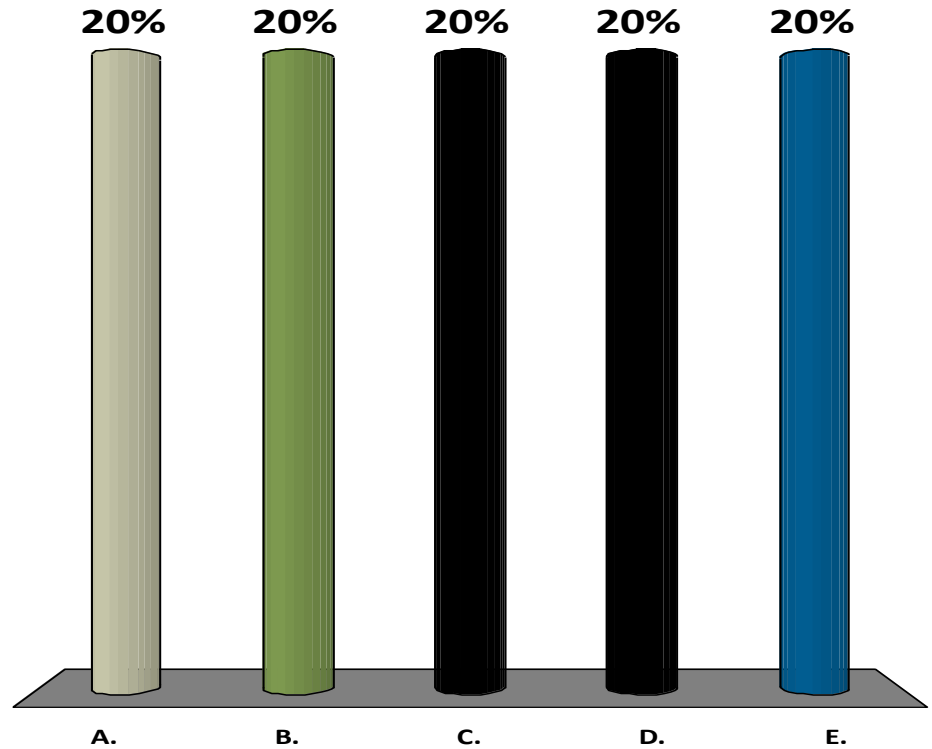
- A. Pedestrian level lighting only throughout
- B. Overhead street lighting throughout the project.
- C. Overhead street lighting only at the intersection
- D. Overhead street lighting at intersections and pedestrian level between





Where room allows, I would like to see benches and green space over parking

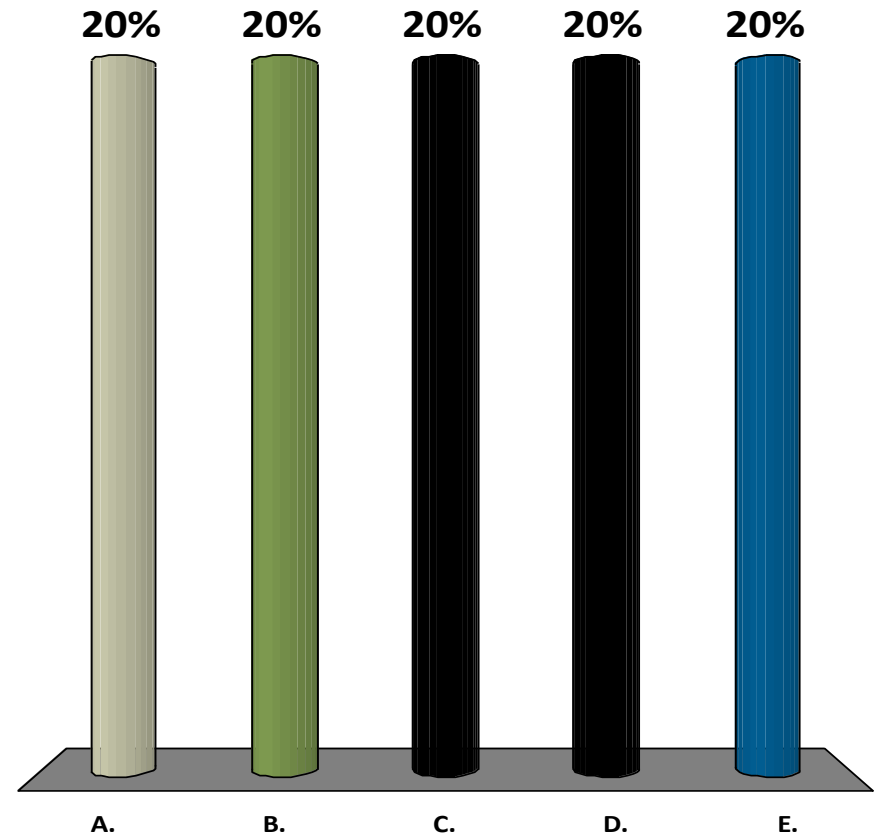
- A. Strongly Agree
- B. Agree
- C. Neutral
- D. Disagree
- E. Strongly Disagree





I would be in favor of sustainable approaches such as rain gardens, bioswales, etc...

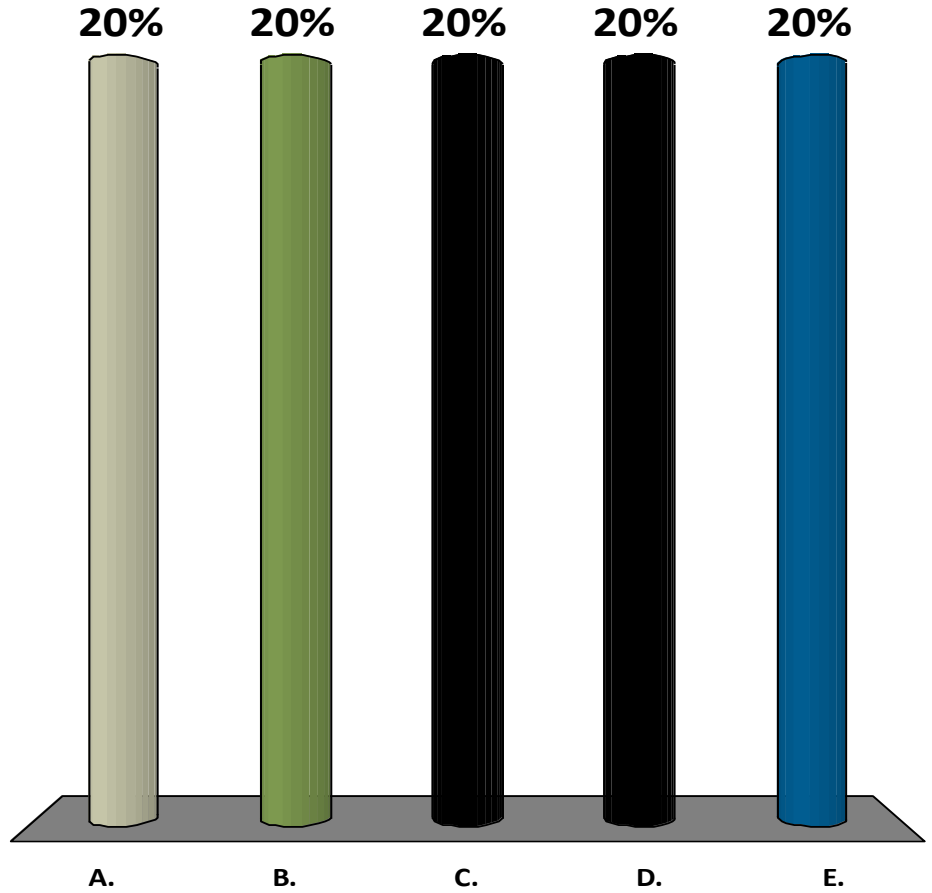
- A. Strongly Agree
- B. Agree
- C. Neutral
- D. Disagree
- E. Strongly Disagree





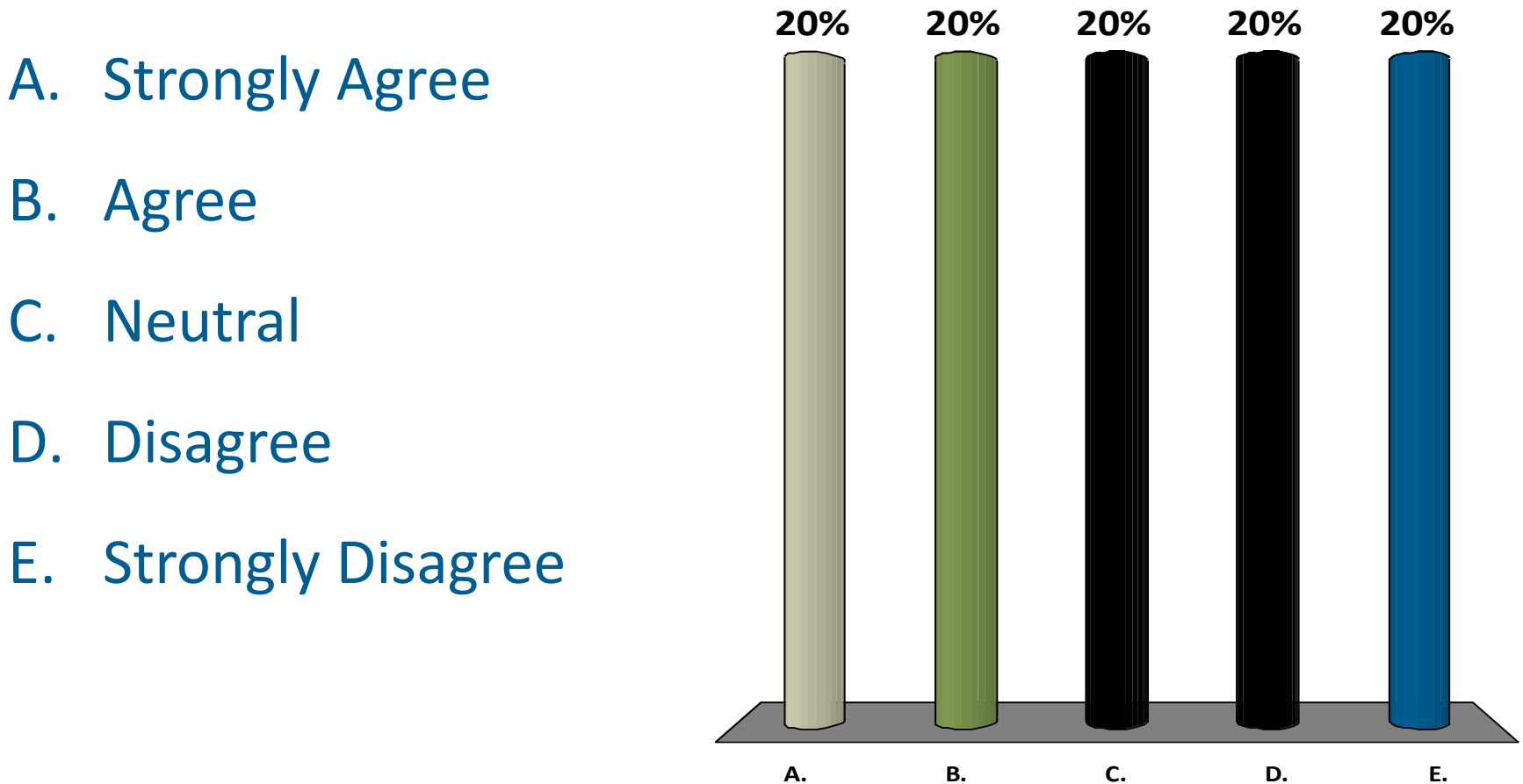
I have trouble turning off Hopkins Street onto other streets due to oncoming traffic

- A. Strongly Agree
- B. Agree
- C. Neutral
- D. Disagree
- E. Strongly Disagree





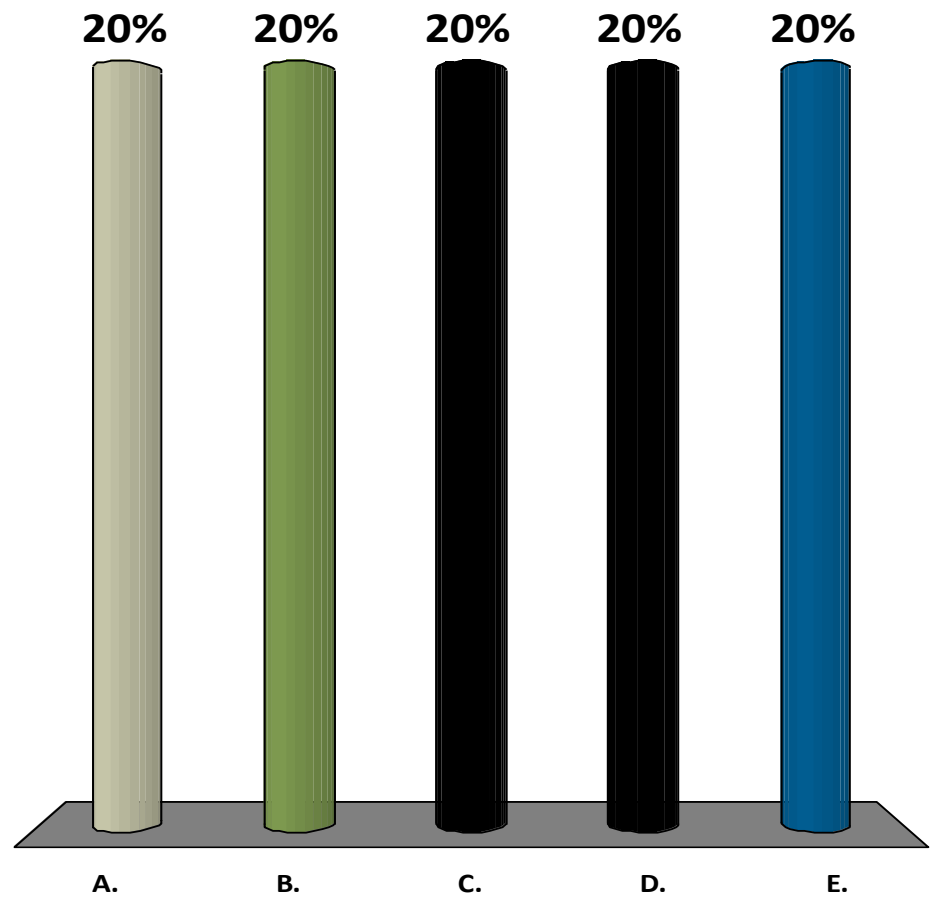
Vehicles travel too fast along Hopkin's Street (above the posted speed limit)





I would like to see some traffic calming along Hopkins Street.

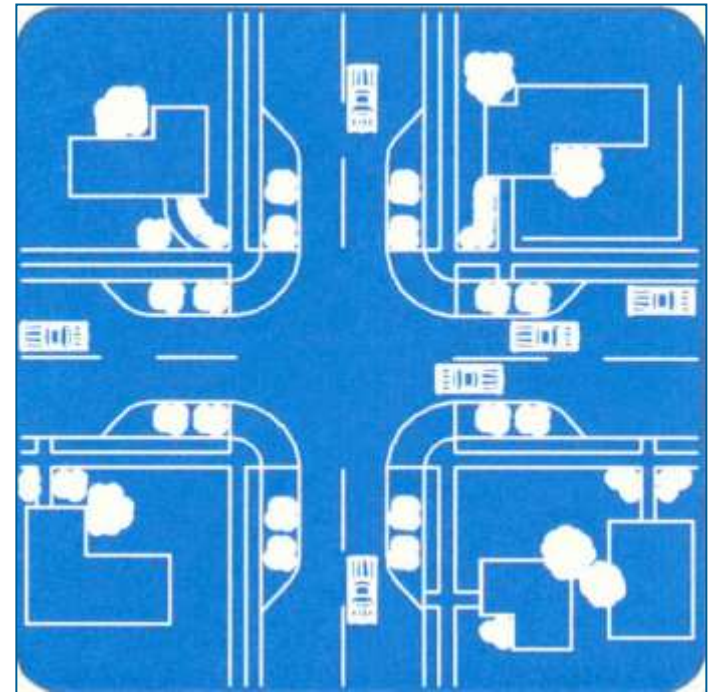
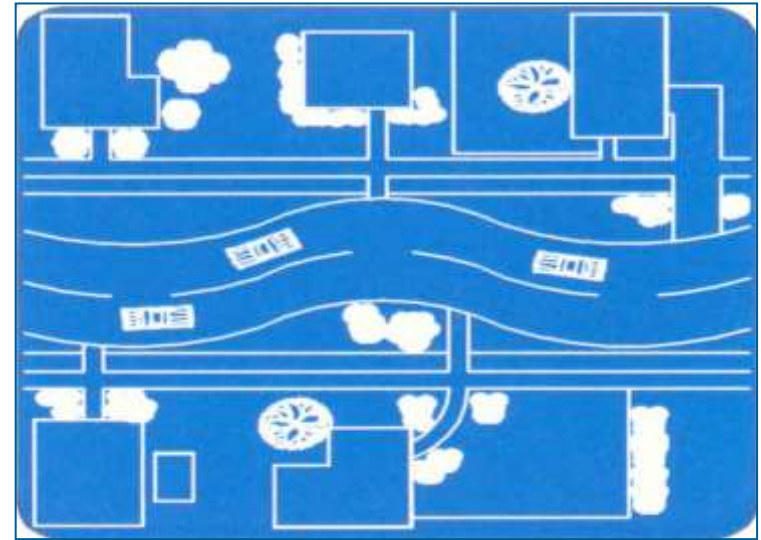
- A. Strongly Agree
- B. Agree
- C. Neutral
- D. Disagree
- E. Strongly Disagree





Rank the following the traffic calming measures from order of importance, with 1 being most important.

- A. Decorative, raised sidewalks crosswalks
- B. Narrower or meandering streets Speed Humps
- C. Traffic Circles
- D. Raised medians
- E. Intersection Popouts





If the budget doesn't allow for all improvements, how would you rank the most important elements to improve? Rank the following in order of priority, with 1 being most important.

- A. Pedestrian level lighting
- B. Overhead street lighting
- C. Street trees
- D. Adequate lanes to carry traffic
- E. Water Quality
- F. Sidewalks on both sides of the street
- G. Traffic Calming
- H. Bike Amenities
- I. Gateway Monumentation

Next Steps



- Stay Connected – Project Website
 - Current project status, maps and reports
 - Take a survey
- Public Meeting 2 – Presenting Design Alternatives
 - Date To Be Determined
- City Council Meeting – Date To Be Determined
- 30% Design January 2016
- Construction Summary of 2017